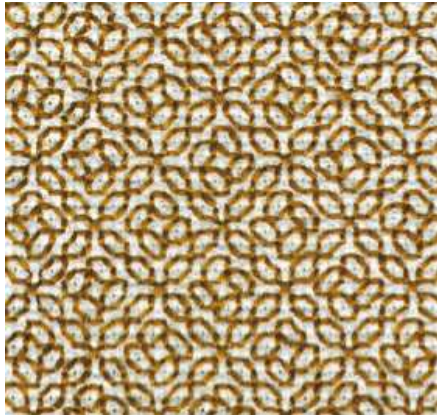
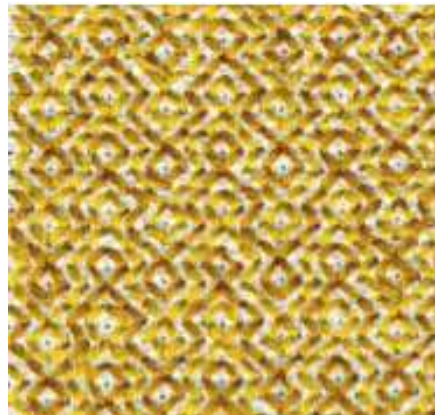


## Fill Patterns

Many of these patterns are traditional blackwork. Original patterns are marked RB. Mathematical symmetry codes are given in bold.



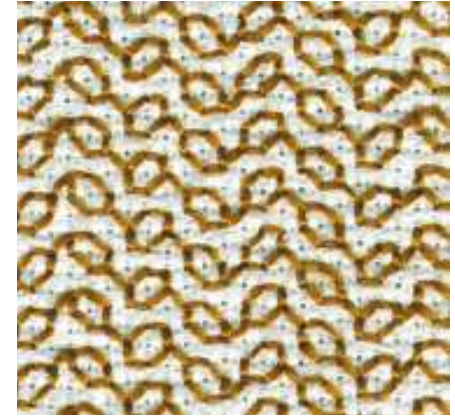
Medallion fill in *Bamidbar*  
**cmm**, 180° rotations with nonparallel reflections. Some rotation centers are not on reflection axes.



Islamic frieze fill in *Bamidbar*  
**pmg**, 180° rotations, parallel reflections. RB



Flower fill in *Bamidbar*  
**p4m**, 90° rotations, reflections. The reflection axes intersect at 45°.



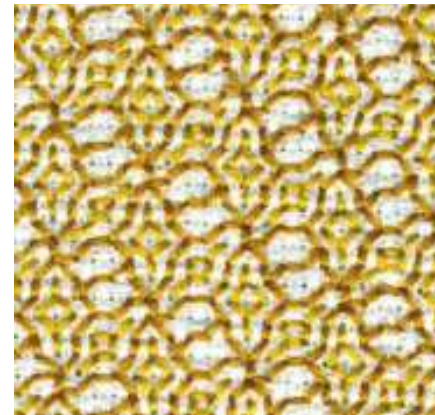
Vine fill in *Bamidbar*  
**p1**, translation. RB



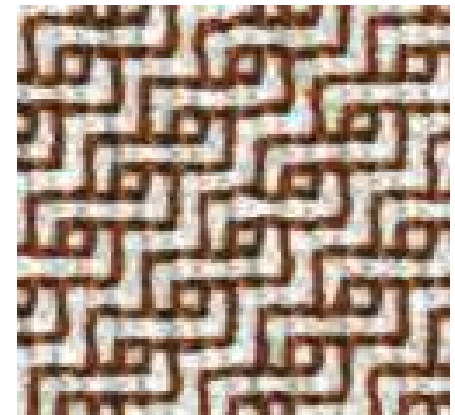
Freehand fill in *Bamidbar*  
This pattern is derived from a weaving pattern known as plaited twill. RB



Rolling Grecian fill in *Bamidbar*  
**p1**, translation.



Tessellation fill in *Bamidbar*  
**p2**, 180° rotations. RB



Decending knot fill in *Bamidbar*  
**p2**, 180° rotations. The illustration has been rotated 90° from the original embroidery.